



Spotlight

Youth Theatre Performs *Dear Edwina* Aug. 25-28

-by Donna Klein, Director

Inside this issue:

Editor's Corner	2
How About those Hats?	2
Recollecting <i>My Fair Lady</i>	2
Community Characters	3
Ticket Order Form	3
About Our Theatre	4

<http://rcctheatre.org>

Did You Know...

Dear Edwina was performed first by amateur groups, and only later became an off-Broadway hit. Here are the details:

- Written in 1990s
- Licensed to amateur groups 1998
- Benefit production in NYC, 2006
- Finally staged Off-Broadway in 2008, 2009, 2010
- Won two Drama Desk awards for outstanding music and lyrics in 2009

Mark your calendar for August 25 – 28. You don't want to miss *Dear Edwina Jr.*, RCCT's 2016 summer youth production! Nineteen talented young people have come together to present this gem of a show for you. With music by Zina Goldrich and book and lyrics by Marcy Heisler, *Dear Edwina* is often described as "Glee" for kids, but this show is bound to satisfy the whole family!

The story follows a day in the life of Edwina Spoonapple, young advice-giver extraordinaire, as she and her friends present their weekly show from the family's garage in Paw Paw, Michigan. This week the gang is auditioning for the Advice-a-paloo-za coming up in Kalamazoo. Dr. Phil had to back out, so a slot is open.

Comedy ensues as Edwina and her friends ask and answer questions from kids who write in to the show. This week they sing about picky eaters, party etiquette, how to properly set a table, how to make friends when you move to a new place, and the value of saving for the things you want. A good dose of family dynamics is mixed in as Edwina feels she is competing with her siblings for a spot 'up on the fridge.' She's also the love interest of Scott. Too bad she doesn't feel the same about him. This all adds up to 90 minutes of fun on stage and in the audience!

Tickets are \$12 for seniors, \$10 for adults, and \$6 for students. Tickets are available at the Presque Isle Advance newspaper office, at the box office and always at the door!



Crew

Director: Donna Klein
 Asst. Directors: Karen Maher and Anne Spens
 Choreography: Baylee Lijewski
 Music: Dan Bowman
 Lights: Marissa Brown
 Coach: Bob Starnes IV
 Others helped, too. Thanks!

Cast List

Character

Brianne Alexander	Ziggy
Maiah Brown	Abigail
Jacob Bruski	Joe
Ashley Bunton	Ludmilla
Alisa Clement	Alisa
Lily Clement	Myra
Muriel Garms	Annie
Jayden Hansen	Becky
Lexia Haske	Aphrodite
Bradley Heidemann	Scott
Izabelle Loughran	Edwina
Hannah Meharg	Frankie
Aiden Monroe	Aiden
Ashlee Nowicki	Susie
Emmalyn Riddle	Queen
Chloe Schultz	Kelli
Mollie Spens	Katie
Isabella Whitford	Katie

Note: Many actors will play multiple roles, but only their favorite role is listed above. See the show program for a full list of characters portrayed.

SHOW SCHEDULE

Evening Shows:

Thursday, Aug. 25
 Friday, Aug. 26
 Saturday, Aug. 27
 Shows start at 7:30
 (doors open at 7:00)

Matinee:

Sunday, August 28
 Show starts at 2:00
 (doors open at 1:30)

Tickets:

available at the door

Editor's Corner: Our Grads

by Mary Ann Heidemann



This summer marks the eleventh consecutive summer youth theater, reminding us all how very important our young people are to the vitality and future of the community theatre enterprise. This spring, several young thespians graduated both from high school and from our productions. Before they make their dramatic exit, I want to tell you about their many past accomplishments, and some of their future plans.

A recent theatrical recruit is Nolan Ryan, a home-school grad whose only prior experience in acting came from participation in a couple of church plays. But he

saw an ad in the *Advance* about open auditions for the play, *Leaving Iowa*, and thought he'd give it a try. He landed the part as the younger version of Don Browning, and it jump-started his love of acting. Another jump happened when he auditioned for *My Fair Lady* this year, and was cast as Freddy, memorably singing "On the Street Where You Live" opposite Lucy DeDecker playing Eliza Doolittle.

Not surprisingly, Freddy was his favorite role, and he successfully managed the age gap between himself and Lucy by focusing on Freddy's fresh, youth-

ful and naïve charm. Nolan also enjoyed meeting all the new and different types of people in the cast, and picking up acting tips from more seasoned performers.

Though Nolan felt somewhat intimidated by his first audition, working in the theatre has helped build his self-confidence. Nolan also believes the people skills he gained in theatre will help him in the future.

Beginning this fall, Nolan will attend Hillsdale College, where he intends to study journalism and politics. But Nolan plans to (this story continues on page 3)

How About Those Hats!

with help from Julie Riddle

"When you think about *My Fair Lady*," says Rogers City Community Theatre Board Member Julie Riddle, "you can't help thinking about all those fantastic hats." So when the Marketing Committee was looking for a way to enhance the theatre experience, they decided to offer a free hat try-on booth during *My Fair Lady* performance dates last May, complete with instant photo services, so guests would have a show memento to take home.

"The *Photo Booth* iPad app was great, because it produced strips of four different snapshots, just like the old photo booths from our youth," said Riddle. "Considering that we already had a printer and backdrop for the photos, setting up the booth was cheap, easy and fun."

Using numerous Edwardian-era hats on loan from the historic clothing retailer, Recollections, the RCCT Board was able to create a booth at

the rear of the auditorium, where it was intensely patronized before and after shows, as well as during intermission.

"From our statistics, we had 98 separate photo sessions, with one to four people per session. It was a great turnout," said Julie, "and an homage to the magic of hats. Pop one on and you become a different person; unique, strong, and brave enough to let your inner child out to play. Special things, hats." Yes, indeed. Thanks, Julie!

Recollecting *My Fair Lady*

with help from Val Schalk

Recollections, the world-class historic fashion manufacturer located in Hawks, has long been a generous friend of the Rogers City Community Theater, but costumes created for the recent production of *My Fair Lady* were simply over the top. When Val Schalk, costumer for the show, told Recollections owner Marianne Fairbanks about the upcoming production, a unique collaboration began. Fairbanks has always featured Edwardian-era clothing in her catalogue, but she developed a special new collection based on

My Fair Lady characters, particularly Eliza Doolittle.

"We produced more than 30 new items around show themes," said Schalk. "Then Donna Klein, (theater marketing chair, as well as advertising consultant to Recollections) would use our Garment Gossip Blog to talk about the costumes, the show, Edwardian fashions, and topics like British high society behavior at the Ascot races. The blogs generated customer interest, and we sold quite a few of the featured costumes during the show. We plan to keep them available as part of the permanent collection."

The Ascot race scene in the Rogers City theater production of *My Fair Lady* was an especially effective venue to show off the costumes, because the actors slowly strutted across the stage one by one, generating gasps of awe and appreciation among the audience.

In addition to the Ascot dresses, which were elegant black and white formal wear, Eliza's Cockney flower-girl dress was a big hit. If you missed the show, or want to relive it, you can see the costumes on the Recollections web site, www.recollections.biz



Eliza Doolittle's Ascot gown, as recreated by Recollections. See more from the catalogue at: www.recollections.biz

Community Characters: Theatre Grads Nolan, Baylee and Salena

(story continued from page 2)

leave room in his program for a minor in theatre arts.

Another of our theatre grads, Baylee Lijewski, has appeared in five youth shows and two adult RCCT productions. Her experience began with *Willy Wonka, Jr.*, where she played a ballerina, a dancing squirrel and a chef. Now she's choreographing and teaching dancing moves to youngsters cast in the current youth show, *Dear Edwina*, as well as helping show director Donna Klein with production notes.

Baylee's favorite role came last year, when she played Lauren in *Yearbook Reflections*. She identified with Lauren's penchant for helping others. Baylee still sings one of the songs from that show, A-B-C-D-F, when she has to get through tough times. Theatre, say Baylee, has

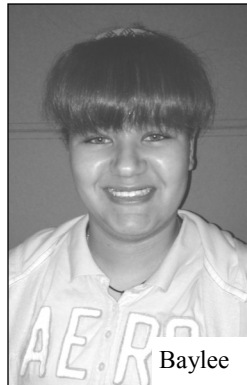


Nolan

helped her open up as a person, and relate to others.

This fall Baylee will attend Alpena Community College and begin studies in early childhood education. But she won't leave acting totally behind. Like Nolan, she will be incorporating theatre classes into her college program.

Salena Heidemann, as the granddaughter of theater promoter Karl Heidemann, has the longest performance history of our three grads. Her experience began at age six, when she appeared in *The Music Man*. When asked how many shows she's been in, Salena said: "I counted once, and it was 15, but that was a couple years ago, and now the total's more than 20. Theatre's fun. It sucks you in, then you just can't quit."



Baylee

The favorite role for Salena came playing, in her own words, "that annoying older sister in *Leaving Iowa*." She could be a brat at home, and just tell her mom she was practicing for the show!



Salena

Theater has helped Salena learn how to work with others, "especially during production week when everyone is crazy." It's also helped her learn to speak and communicate more clearly, and get over her shyness. Salena will be attending Ferris State University this fall, where she plans to study dental hygiene. But like our other grads, she wants to keep acting. "I'll find a community theatre wherever I go."

We will miss you three, but good luck and pass along that theatre magic!

Order Your Tickets Today

Ticket Order Form (Fill out, clip and mail to address below. Tickets will be held for pick up at the Box Office)

Please reserve for pick-up the number and type of tickets indicated below:

Number:	Amount:
_____ Six Pack punch card; mix and match any six admissions for \$50	_____
_____ General Admission to <i>Dear Edwina, Jr.</i> @ \$12 each	_____
_____ Senior Admission to <i>Dear Edwina, Jr.</i> @ \$10 each	_____
_____ Student Admission to <i>Dear Edwina, Jr.</i> @ \$6 each	_____
Total:	_____

Information for program listing or ticket pick-up:

Name: _____
 Street Address: _____
 City, State, Zip: _____
 Phone: _____ e-mail: _____

Make check payable to : Rogers City Community Theatre
 Mail completed form to: 257 North Third Street
 Rogers City, MI 49779



Be an Angel!

Are you an Angel?

The Rogers City Community Theatre is a 501 (c) (3) non-profit corporation committed to bringing quality theater to NE Michigan. Donations are an important part of our budget. Please consider enabling our work through your gifts, at any level.

- _____ \$500 Heavenly Host
- _____ \$250 Archangel
- _____ \$100 Guardian Angel
- _____ \$ 50 Seraphim
- _____ \$ 25 Cherubim

Angels will be recognized under the appropriate category heading in all 2016 show programs. Thanks for your continuing support!

*We have the lowest ticket price in NE Michigan
 We can keep it that way with your donations*

Rogers City Community Theatre

257 North Third Street
Rogers City MI 49779



Find us on the web:
rogerscitytheater.com

PRST STD
US POSTAGE PAID
ROGERS CITY, MI 49779
PERMIT NO. 115

Temp - Return Service Requested

To:

About Our Theatre



ROGERS CITY COMMUNITY THEATRE

257 North Third Street
Rogers City, MI 49779

Theatre Office Phone: (989) 734-7368
Movie & Show Hotline: (989) 734-3861
Web: <http://rcctheatre.org>
Join our group on Facebook!

Newsletter Editor:
Mary Ann Heidemann



See you at the show!

The Rogers Theatre was constructed in 1937 as a classic, single screen small town movie palace in the Art Deco style. After a fire in 1947, the theatre was rebuilt and expanded. Serving as a downtown landmark for decades, the theatre was purchased in 2003 by Karl W. Heidemann. The new owner added a stage, theatrical lighting and utility improvements. In 2004, live productions began alternating with first run movies, in a revitalized auditorium. In the summer of 2009, exterior restoration brought back the black and orange ceramic work of the original façade.

Once the stage was available, an informal group of local theatre fanatics emerged that now constitutes the Rogers City Community Theatre (RCCT). In 2006, a summer youth theater program began as well. Community cast members have ranged from age 6 to 94. New cast and crew volunteers are always welcome! In 2009, the RCCT incorporated as a Michigan non-profit organization and received IRS approval for federal non-profit status. Contributions are appreciated, and are tax deductible as allowed by law.

In 2013, a community-based fundraising drive provided support for installation of new theatre seating, sound system improvements, a digital 3-D projector and a new highly reflective screen, putting our theater at the cutting edge of stage and movie technology. In June 2016, Mary Ann and Karl Heidemann donated the theater building to the Presque Isle District Library for use as a community education and entertainment center, with a long-term lease for the Rogers City Community Theatre, ensuring access to theatre and fun for the next generation.